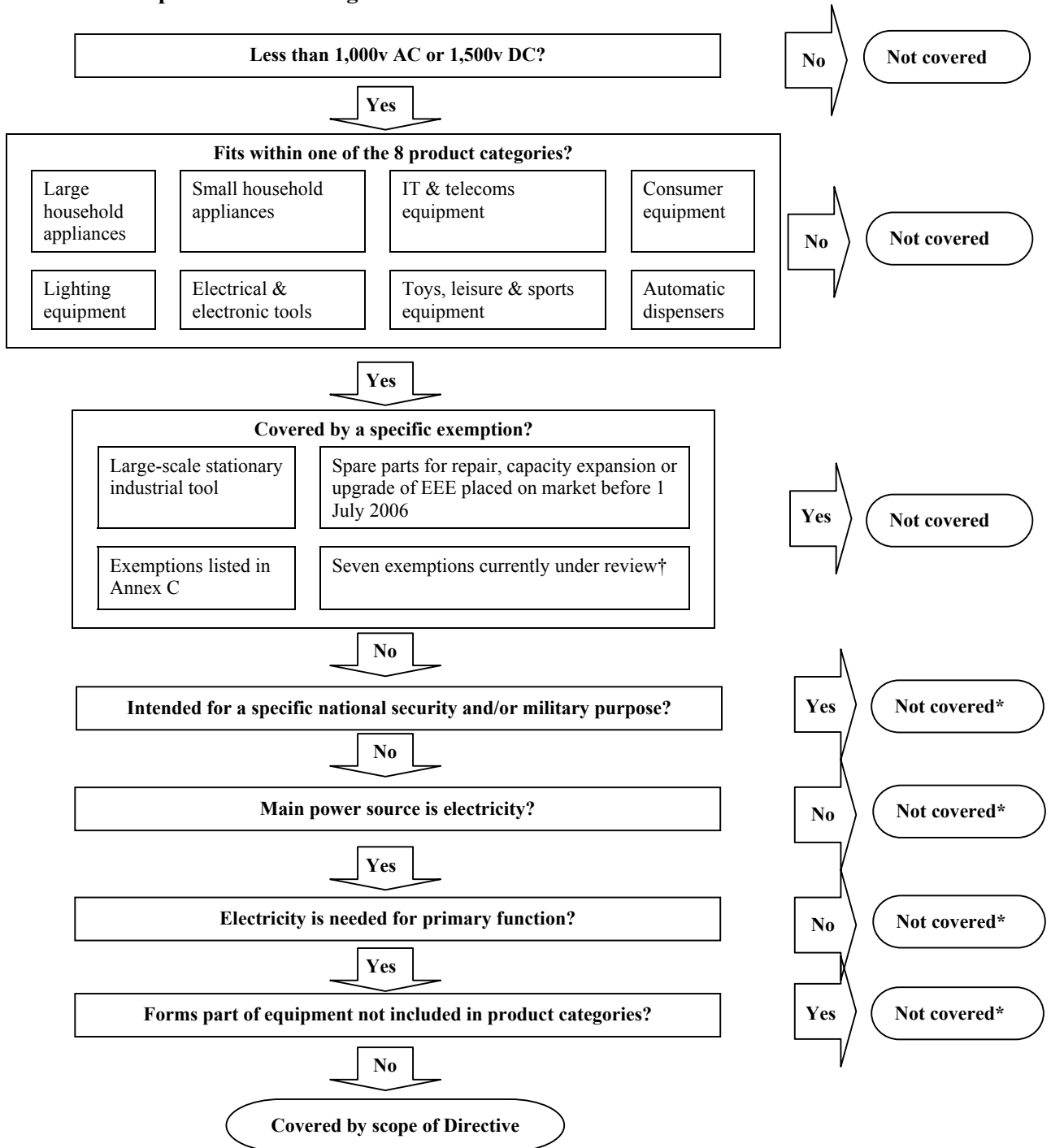


## Annex B

A 'decision tree' that could be used to decide whether or not a product might come within the scope of the RoHS Regulations.



\*While these exclusions are not expressly provided for in the Directive, it is the UK view that they apply. It should be noted, however, that a definitive legal interpretation is only available from the court. Producers should rely on independent legal advice on compliance.

†It cannot be assumed that these exemptions will be granted. The review is not due to be completed until early 2005.